



**STUDENT  
MICROSCOPES**



**RESEARCH  
MICROSCOPES**

**DIGITAL  
MICROSCOPES**



**METALLURGICAL  
MICROSCOPES**



**WATER BATHS  
& CENTRIFUGE  
MACHINES**



**IMAGING  
CAMERAS  
&  
SOFTWARES**

**HEATING &  
REFRIGERATION  
INSTRUMENTS**



**BIO SAFETY  
CABINETS,  
FUME HOODS  
& LAMINARS**



**PRODUCT  
CATALOG**



# DISSECTING & EDUCATIONAL MICROSCOPES

Dissecting and Student microscopes serve important purposes in the educational sector. Dissecting microscope allows students to examine larger specimens in detail, making it ideal for anatomy and morphology studies. It aids in dissecting organisms like insects, plants, and small vertebrates, facilitating the observation of intricate structures and systems. On the other hand, a Student microscope is designed for general microscopic observations. It helps students study microscopic organisms, cells, and tissues, fostering a deeper understanding of biology. Both microscopes promote hands-on learning, critical thinking, and the development of scientific skills, enabling students to explore the diverse world of biology from macroscopic to microscopic levels.



MD-1 Dissecting Microscope is used for demonstration, close study of small organisms and fine dissection work. The high-eye point lenses 10x & 20x have alternative use of a jointed arm allowing the whole stage area to be scanned .

The stage (85mm x 75mm) is provided with spring stage clips, has a glass plate with arrangement for inserting white/black metal plate for respective background substage piano-concave mirror reflects sufficient daylight and artificial light on the object.

The Rack & Pinion mechanism is enclosed within the stage support pillar, and is operated by knob on either side. Detachable hand rests on both sides of the stage providing for a steady support during dissection.

**Packaging:** Inner Thermocol/Styrofoam Packing and Outer Cardboard Box.



# SENIOR DISSECTING MICROSCOPE MD-2



MD-2 Senior Dissecting Microscope has heavy round base with a precisely designed body. Sensitive focussing is done by rack-pinion movement. A joint revolving arm is provided for moving magnifying lens overfull area of the stage. It is easily replaceable by a special bulls eye lens (83mm dia.) to increase the field of vision.

A piano-concave mirror reflects sufficient day light and artificial light on the object. Detachable hand rests on both sides of stage provided for a study support during dissection. Provided with 10x & 20x eye pieces and special bulls eye lens (83mm dia.).

Packed in wooden carrying cabinet.

**Packaging:** Inner Thermocol/Styrofoam Packing and Outer Cardboard Box.

# JUNIOR STUDENT MICROSCOPE BM-2

The excellent appearance  
in accord with ergonomic design

Integrated body design  
makes products maintains  
long-term stability.

- Eye Piece:** One 10X & one 15X Hygeniun Eye–Piece
- Nosepiece:** Triple revolving nosepiece with click stops.
- Stage:** High quality S.S. Stage clips provided to hold the slide.
- Focusing:** By vertical movement of the Observation tube, with coarse adjustment using rack pinion movement and, fine motion by screw lever mechanism,
- Condenser:** Abbe condenser having Numerical aperture of 1.25 with iris Diaphragm and swing out filter holder. This condenser Unit incorporates high efficiency optical system for optimum utilization of light
- Light:** arc reflector set for using natural light to study the slide
- Objective:** Achromatic 10x and 40x.
- Packaging:** Inner Thermocol/Styrofoam Packing and Outer Cardboard Box.



This microscope have well designed heavy and sturdy pressure die casted monocular body inclinable to 90° to meet the requirements of School and college students

**Eye Piece:** Wide-Field 10X Eye-piece or set of 10x & 15x Huygenian Eye-pieces.

**Nosepiece:** Triple revolving nosepiece with click stops.

**Stage:** High quality S.S. Stage clips provided to hold the slide.

**Focusing:** By vertical movement of the observation tube, with coarse adjustment using rack-pinion movement and fine motion by screw level mechanism.

**Condenser:** Abbe condenser having Numerical aperture of 1.25 with iris diaphragm and swing out filter holder.

**Illumination:** Arc-Reflector set for using natural light to study the slide.

**Objective:** Achromatic 10x and 40x.

**Packaging :** In mould styrofoam box or wooden storing cabinet with lock and key (on demand)

**Packaging:** Inner Thermocol/Styrofoam Packing and Outer Cardboard Box.

# COMPOUND STUDENT MICROSCOPE BM-3





This microscope have well designed heavy and sturdy pressure die casted monocular body inclinable to 90° to meet the requirements of School and college students

**Eye Piece:** Wide-Field 10X Eye-piece or set of 10x & 15x Huygenian Eye-pieces.

**Nosepiece:** Triple revolving nosepiece with click stops.

**Stage:** High quality S.S. Stage clips provided to hold the slide.

**Focussing:** By vertical movement of the observation tube, with coarse adjustment using rack-pinion movement and fine motion by screw level mechanism.

**Condenser:** Abbe condenser having numerical aperture of 1.25 with iris diaphragm and swing out filter holder can be moved through rack and pinion. This condenser unit incorporates high efficiency optical system for optimum utilisation of light.

**Illumination:** Arc-Reflector set for using natural light to study the slide.

**Objective:** Achromatic 10x and 45x.

**Packaging:** Inner Thermocol/Styrofoam Packing and Outer Cardboard Box.

# COMPOUND STUDENT MICROSCOPE BM-4





This microscope have well designed heavy and sturdy pressure die casted monocular body inclinable to 90° to meet the requirements of School and college students

**Eye Piece:** Wide-Field 10x Eye-piece or set of 10x & 15x Huygenian Eye-pieces.

**Nosepiece:** Triple revolving nosepiece with click stops.

**Stage:** High quality S.S. Stage clips provided to hold the slide.

**Focussing:** By vertical movement of the observation tube, with coarse adjustment using rack-pinion movement and fine motion by screw level mechanism.

**Condenser:** Abbe condenser having Numerical aperture of 1.25 with iris diaphragm and swing out filter holder can be moved through rack and pinion. This condenser unit incorporates high efficiency optical system for optimum utilisation of light.

**Illumination:** Arc-Reflector set for using natural light to study the slide.

**Objective:** Achromatic 10x and 40/45x.

**Packaging:** Inner Thermocol/Styrofoam Packing and Outer Cardboard Box.

# COMPOUND STUDENT MICROSCOPE BM-3A







# LABORATORY MICROSCOPES

We are a leading laboratory microscopes manufacturer, dedicated to providing cutting-edge optical solutions for scientific research and analysis. With a commitment to precision and innovation, our company offers a diverse range of high-quality microscopes tailored to meet the specific needs of various scientific disciplines. Our products are engineered with advanced features and state-of-the-art technology, ensuring exceptional imaging capabilities and accurate results. We prioritize the highest standards of manufacturing, incorporating rigorous quality control processes to deliver reliable and durable microscopes that empower scientists and researchers worldwide. With our expertise and passion for scientific advancement, we are your trusted partner in the pursuit of knowledge and discovery.



ISI Marked Medical Microscope has a well designed heavy and sturdy die casted monocular body inclinable to 90° to meet the needs of school and college students

- > Observation tube with mechanical tube length 160mm with triple nose piece.
- > Separate coarse and fine motion.
- > Fixed Co-axial horizontal graduated mechanical stage 120mm x 120mm with convenient adjustment for slide movement.
- > Double lens bright field abbe condenser NA 1.25 is fixed below the stage with iris diaphragm and swing out filter holder , can be moved through rack-pinion.
- > Adjustable down stopper for preventing accidental damages to slide
- > Illumination by piano concave mirror

**Also available without ISI mark**

**Packaging:** Inner Thermocol/Styrofoam Packing and Outer Cardboard Box.

# MEDICAL MICROSCOPE BM-5



MONO



TL



ABBE



2 DAY





## Pathological Monocular Microscope

- > One 10x Wide Field Eye -piece.
- > 4 nos. Objectives, Parafoal Achromatic, 4x, 10x, 40x SL and 100x SL Oil immersion.
- > Stage : Horizontal Mechanical of size 120 X 125mm min.
- > Focussing : Separate coarse and fine focussing.
- > Illumination : LED Light with on/off switch, light intensity regulator and Plano concave mirror attachment suitable for 220V, 50 Hz. AC supply.

**Also available without ISI mark**

**Packaging:** Inner Thermocol/Styrofoam Packing and Outer Cardboard Box.

# PATHOLOGICAL MONOCULAR MICROSCOPE BM-6mo



## Pathological Binocular Microscope

- > Two 10x Wide Field Eye -piece.
- > 4 nos. Objectives, Parafoical Achromatic, 4x, 10x, 40x SL and 100x SL Oil immersion.
- > Stage : Horizontal Mechanical of size 120 X 125mm min.
- > Illumination : LED Light with on/off switch, light intensity regulator and Plano concave mirror attachment suitable for 220V, 50 Hz. AC supply.
- > Eye Pieces for Binocular Microscope confirm to ISI : 8275:1976

**Also available without ISI mark**

**Packaging:** Inner Thermocol/Styrofoam Packing and Outer Cardboard Box.



# PATHOLOGICAL BINOCULAR MICROSCOPE BM-6bi





## Pathological Monocular Microscope

- > One 10x Wide Field Eye -piece.
- > 4 nos. Objectives, Parafoical Achromatic, 4x, 10x, 40x SL and 100x SL Oil immersion.
- > Stage : Co-axial Horizontal Mechanical of size 120 X 125mm min.
- > Focussing : Co-axial coarse and fine focussing.
- > Illumination : LED Light with on/off switch, light intensity regulator and Plano concave mirror attachment suitable for 220V, 50 Hz. AC supply.

**Also available without ISI mark**

**Packaging:** Inner Thermocol/Styrofoam Packing and Outer Cardboard Box.

# PATHOLOGICAL MONOCULAR MICROSCOPE BM-8mo



## Pathological Binocular Microscope

- > Two 10x Wide Field Eye -piece.
- > 4 nos. Objectives, Parafoal Semi-Plan Achromatic, 4x, 10x, 40x SL and 100x SL Oil immersion.
- > Stage : Horizontal Mechanical of size 120 X 125mm min.
- > Illumination : LED Light with on/off switch, light intensity regulator and Plano concave mirror attachment suitable for 220V, 50 Hz. AC supply.
- > Eye Pieces for Binocular Microscope with coaxial focussing control confirm to IS : 8275:1976

**Also available without ISI mark**

**Packaging:** Inner Thermocol/Styrofoam Packing and Outer Cardboard Box.



**BM-8TR**

# PATHOLOGICAL BINOCULAR MICROSCOPE BM-8bi



- > Ergonomic Design
- > Exceptional Precision
- > Accurate Measurements
- > Highest Industry Standard
- > Outstanding Optical Performance

The BM-9bi reflects friendly design suitable for both the classroom and laboratory environment. Embodied with sturdy C-shaped aluminum alloy die-cast stand, high quality optics and optical coatings, and brass gears, all of the which compose the BM-9bi to resist the toughest of user environments.

- > Binocular Head having Hard coated prisms
- > Quadruple revolving Ball Bearing Nose piece
- > Co-axial Focussing system
- > Double layered mechanical stage with low positioned coaxial knobs
- > Bright LED Light with Solid state power supply circuitry.
- > Semi-Plan Achromatic objectives, Extra Wide Field Eye Piece {Hard Coated} along with high quality condenser lens for better results for all magnifications.

**Objectives:** 4x, 10x, 40x, 100x (oil)

**Eye pieces :** EWF 10x (18mm Paired)

**Also available without ISI mark**

**Packaging:** Inner Thermocol/Styrofoam Packing and Outer Cardboard Box.



**BM-9TR**



# BINOCULAR MICROSCOPE BM-9bi





# ULTRA SERIES MICROSCOPES

We are a leading laboratory microscopes manufacturer, dedicated to providing cutting-edge optical solutions for scientific research and analysis. With a commitment to precision and innovation, our company offers a diverse range of high-quality microscopes tailored to meet the specific needs of various scientific disciplines. Our products are engineered with advanced features and state-of-the-art technology, ensuring exceptional imaging capabilities and accurate results. We prioritize the highest standards of manufacturing, incorporating rigorous quality control processes to deliver reliable and durable microscopes that empower scientists and researchers worldwide. With our expertise and passion for scientific advancement, we are your trusted partner in the pursuit of knowledge and discovery.





# *ultra* Series

**Eyepiece:** Extra wide field 10x Eye-piece specially designed for ultra series.

**Nosepiece:** Triplet revolving nosepiece with click stops.

**Stage:** High quality S.S. Stage clips provided to hold the slide.

**Focusing:** By vertical movement of the Observation tube, with coarse adjustment using rack-pinion movement and, fine motion by screw lever mechanism.

**Condenser:** Abbe condenser having Numerical aperture of 1.25 with iris Diaphragm and swing out filter holder. This condenser unit incorporates high efficiency optical system for optimum utilization of light.

**Light Source:** Battery operated LED pin-type Lamp with on and off switch and an optional arc-reflector set for using natural light to study the slide.

**Objective:** Achromatic 10x and 40x.

**Packaging:** Inner Thermocol/Styrofoam Packing and Outer Cardboard Box.

## MONOCULAR STUDENT MICROSCOPE **BM-3** *ultra*





# *ultra* Series

**Eyepiece:** Extra wide field 10x Eye-piece specially designed for ultra series.

**Nosepiece:** Triplet revolving nosepiece with click stops.

**Stage:** High quality S.S. Stage clips provided to hold the slide.

**Focusing:** By vertical movement of the Observation tube, with coarse adjustment using rack-pinion movement and, fine motion by screw lever mechanism.

**Condenser:** Abbe condenser having Numerical aperture of 1.25 with iris Diaphragm and swing out filter holder can be moved through rack-pinion. This condenser unit incorporates high efficiency optical system for optimum utilization of light.

**Light Source:** Battery operated LED pin-type Lamp with on and off switch and an optional arc-reflector set for using natural light to study the slide.

**Objective:** Achromatic 10x and 40x.

**Packaging:** Inner Thermocol/Styrofoam Packing and Outer Cardboard Box.

## JUNIOR MEDICAL MICROSCOPE **BM-4** *ultra*



MONO



LED



TL



ABBE



BATT



2 DAY





# *ultra* Series

**Eyepiece:** Extra wide field 10x Eye-piece specially designed for ultra series.

**Nosepiece:** Triplet revolving nosepiece with click stops.

**Stage:** Built in graduated co-axial mechanical stage having size of 135 mm x 120 mm, which is controlled two separate knobs for easy scan of slide.

**Focusing:** By vertical movement of the Observation tube, with coarse adjustment using rack-pinion movement and, fine motion by screw lever mechanism having graduated knob.

**Condenser:** Abbe condenser having Numerical aperture of 1.25 with iris Diaphragm and swing out filter holder can be moved through rack-pinion. This condenser unit incorporates high efficiency optical system for optimum utilization of light.

**Light Source:** Battery operated LED pin-type Lamp with on and off switch and an optional arc-reflector set for using natural light to study the slide.

**Objective:** Achromatic 10x and 40x and 100x (Oil immersion).

**Packaging:** Inner Thermocol/Styrofoam Packing and Outer Cardboard Box.

## MEDICAL MICROSCOPE BM-5 *ultra*





# *ultra* Series

- > All New Design
- > Monocular Head having hard coated prisms
- > Quadruple revolving Ball Bearing Nose piece
- > Separate Coarse and Fine Focussing system
- > Double layered mechanical stage with low positioned coaxial knobs
- > Bright LED Light with Solid state power supply circuitry.
- > Plan Achromatic objectives, Extra Wide Field Eye Piece (Hard Coated) along with high quality condenser lens for better results for all magnifications.

**Objectives :** 4x, 10x, 40x, 100x (oil)

**Eye pieces:** EWF 10x (18mm Paired)

**Packaging:** Inner Thermocol/Styrofoam Packing and Outer Cardboard Box.

## MONOCULAR MICROSCOPE BM-6mo

*ultra*





# *ultra* Series

- > Monocular Head having Hard coated prisms
- > Quadruple revolving Ball Bearing Nose piece
- > Co-axial Focussing system
- > Double layered mechanical stage with low positioned coaxial knobs
- > Bright LED Light with Solid state power supply circuitry.
- > Plan Achromatic objectives, Extra Wide Field Eye Piece {Hard Coated} along with high quality condenser lens for better results for all magnifications.

**Objectives:** 4x, 10x, 40x, 100x (oil)

**Eye pieces :** EWF 10x (18mm Paired)

**Packaging:** Inner Thermocol/Styrofoam Packing and Outer Cardboard Box.

**Optional Packaging:**

- 1) Wooden Box outer cabinet with lock and key (Chargeable).



## MONOCULAR MICROSCOPE BM-8mo

*ultra*



- > Ergonomic Design
- > Exceptional Precision
- > Accurate Measurements
- > Highest Industry Standard
- > Outstanding Optical Performance

- > All New Design
- > Binocular Head having Hard coated prisms
- > Quadruple revolving Ball Bearing Nose piece
- > Double layered and Fine Focussing system
- > Special graduated mechanical stage with low positioned coaxial knobs
- > Bright LED Light with Solid state power supply circuitry.
- > Plan Achromatic objectives, Extra Wide Field Eye Piece (Hard Coated) along with high quality condenser lens for better results for all magnifications.

**Objectives:** 4x, 10x, 40x, 100x (oil)

**Eye pieces :** EWF 10x (18mm Paired)

**Packaging:** Inner Thermocol/Styrofoam Packing and Outer Cardboard Box.

**Optional Packaging:**

- 1) Wooden Box outer cabinet with lock and key (Chargeable).



**BM-6TR ULTRA**

# RESEARCH BINOCULAR MICROSCOPE

## BM-6bi

*ultra*





# *ultra* Series

- > Binocular Head having Hard coated prisms
- > Quadruple revolving Ball Bearing Nose piece
- > Co-axial Focussing system
- > Double layered mechanical stage with low positioned coaxial knobs
- > Bright LED Light with Solid state power supply circuitry.
- > Plan Achromatic objectives, Extra Wide Field Eye Piece {Hard Coated} along with high quality condenser lens for better results for all magnifications.

**Objectives:** 4x, 10x, 40x, 100x (oil)

**Eye pieces :** EWF 10x (18mm Paired)

**Packaging:** Inner Thermocol/Styrofoam Packing and Outer Cardboard Box.



**BM-8TR ULTRA**

# BINOCULAR MICROSCOPE **BM-8bi** *ultra*



TRINO



BINO



360°



LED



TL



ABBE

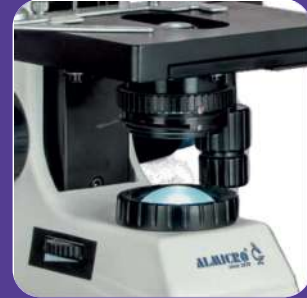


230 V



2 DAY





# XL SERIES MICROSCOPES

As a premier manufacturer of high-quality laboratory microscopes, we pride ourselves on delivering exceptional precision and performance. Our advanced XL Series Microscopes are engineered with utmost care and attention to detail.

With cutting-edge technology and rigorous quality control, our microscopes ensure accurate and reliable results, empowering scientists and researchers in their quest for discovery. Trust us for uncompromising quality and unparalleled imaging capabilities.



The excellent appearance  
in accord with ergonomic design

Integrated body design  
makes products maintains  
long-term stability.

High quality 3W LED lamp  
and long usage life.

**Head:** Binocular Head, Inclined at 30°, 360° Rotatable,  
Interpupillary Distance 54–75 mm, Diopter Adjustable  
± 5 On Left Tube

**Eyepiece:** Wide Field Eyepiece WF 10X/18mm

**Objective :** Plan Achromatic Objectives 4x, 10x, 40xs, 100xs(oil)

**Viewing Head :** Articulated Free Trinocular Head, 30°inclined,  
Interpupillary Distance 54–75mm

**Nosepiece :** Reverse Quadruple Nosepiece (inward facing)

**Focusing System :** Coaxial Coarse and Fine Adjustments, Fine  
Division 0.002mm, Coarse Stroke 36mm Supplied With An  
Adjustable Rack Stop To Prevent Damage To Sample And  
Objectives, The Coarse Adjustment Are Equipped With Friction  
Control

**Stage:** Double Layer Mechanical Stage 110x125mm,  
Moving Range 30x75mm

**Illumination :** 3W LED, Brightness  
Adjustable, Powered by 110–240V Adapter

Inbuilt Battery Backup Facility

**Packaging:** Inner Thermocol/Styrofoam  
Packing and Outer Cardboard Box.



# RESEARCH BINOCULAR MICROSCOPE AXL-Bino





The excellent appearance  
in accord with ergonomic design

Integrated body design  
makes products maintains  
long-term stability.

High quality 3W LED lamp  
and long usage life.

**Head:** Trinocular Head, Inclined at 30°, 360° Rotatable,  
Interpupillary Distance 54-75 mm, Diopter Adjustable  
± 5 On Left Tube

**Eyepiece:** Wide Field Eyepiece WF 10X/18mm

**Objective :** Plan Achromatic Objectives 4X, 10x, 40xs,  
100xs(oil)

**Viewing Head :** Articulated Free Trinocular Head,  
30°inclined, Interpupillary Distance 54-75mm

**Nosepiece :** Reverse Quadruple Nosepiece (inward  
facing)

**Focusing System :** Coaxial Coarse and Fine Adjustments,  
Fine Division 0.002mm, Coarse Stroke 36mm Supplied  
With An Adjustable Rack Stop To Prevent Damage To  
Sample And Objectives, The Coarse Adjustment Are  
Equipped With Friction Control

**Stage:** Double Layer Mechanical Stage 110x125mm, Moving  
Range 30X75mm

**Illumination :** 3W LED, Brightness Adjustable, Powered By  
110-240V Adapter

**Adapter:** Eyepiece Tube Adapter

Inbuilt Battery Backup Facility

**Packaging:** Inner Thermocol/Styrofoam Packing and  
Outer Cardboard Box.

# RESEARCH TRINOCULAR MICROSCOPE AXL-Trino



The excellent appearance  
in accord with ergonomic design

Integrated body design  
makes products maintains  
long-term stability.

High quality 3W LED lamp  
and long usage life.

**Head:** Binocular Head, Sidentoph at 30°, 360° Rotatable,  
Interpupillary Distance 50-75 mm, Diopter Adjustable  
± 5 On Left Tube

**Eyepiece:** Wide Field Eyepiece WF 10X/20mm

**Objective :** SP Plan Achromatic Objectives 4x, 10x, 40x,  
100x(oil)

**Viewing Head :** Articulated Free Trinocular Head, 30°inclined,  
Interpupillary Distance 50-75mm

**Nosepiece :** Reverse Quadruple Nosepiece (inward facing)

**Focusing System :** Coaxial Coarse and Fine Adjustments,  
Fine Division 0.002mm, Coarse Stroke 37.7mm Supplied With  
An Adjustable Rack Stop To Prevent Damage To Sample And  
Objectives, The Coarse Adjustment Are Equipped With  
Friction Control

**Stage:** Double Layer Mechanical Stage 140x140mm,  
Moving Range 50x75mm

**Illumination :** 3W LED, Brightness  
Adjustable, Powered by 110-240V Adapter

**Packaging:** Inner Thermocol/Styrofoam Packing and Outer  
Cardboard Box.

# RESEARCH BINOCULAR MICROSCOPE FXL-Bino



The excellent appearance  
in accord with ergonomic design

Integrated body design  
makes products maintains  
long-term stability.

High quality 3W LED lamp  
and long usage life.

**Head:** Trinocular Head, Sidentoph at 30°, 360° Rotatable,  
Interpupillary Distance 50–75 mm, Diopter Adjustable  
± 5 On Left Tube

**Eyepiece:** Wide Field Eyepiece WF 10X/20mm

**Objective :** SP Plan Achromatic Objectives 4x, 10x, 40x,  
100x(oil)

**Viewing Head :** Articulated Free Trinocular Head, 30°inclined,  
Interpupillary Distance 50–75mm

**Nosepiece :** Reverse Quadruple Nosepiece (inward facing)

**Focusing System :** Coaxial Coarse and Fine Adjustments,  
Fine Division 0.002mm, Coarse Stroke 37.7mm Supplied With  
An Adjustable Rack Stop To Prevent Damage To Sample And  
Objectives, The Coarse Adjustment Are Equipped With  
Friction Control

**Stage:** Double Layer Mechanical Stage 140x140mm,  
Moving Range 50x75mm

**Illumination :** 3W LED, Brightness  
Adjustable, Powered by 110–240V Adapter

**Packaging:** Inner Thermocol/Styrofoam Packing and Outer  
Cardboard Box.

# RESEARCH TRINOCULAR MICROSCOPE FXL-Trino



TRINO



360°



LED



TL



ABBE



230 V



2 DAY





The excellent appearance  
in accord with ergonomic design

Integrated body design  
makes products maintains  
long-term stability.

High quality 3W LED lamp  
and long usage life.

**Optical System :** Finite Optical System

**Eyepiece:** PL 1 0X/23mm High Eyepiont Eyepiece,  
Diopter Adjustment  $\pm 5$

**Objective :** 45mm DIN Infinity Corrected Plan  
Achromatic Objective: 4X, 10X, 40X(S), 100X(S,Oil)

**Viewing Head :** Articulated Free Binocular Head,  
30°inclined, Interpupillary Distance 50-75mm

**Nosepiece :** Backward Quintuple or Quadruple  
Objective Nosepiece

**Stage :** 220X148mm X-axis Low Hand Position Double  
Mechanical Stage(steel wire transmission) ,  
76X50mm,Presion 0.1 mm , Damped Double Slide  
Clamp

**Condenser :** Height Adjustable Abbe Condenser Set

**Focusing System :** Coaxial Coarse and Fine Focus  
Knobs, Precision 0.002mm

**Illumination :** 3W LED Lamp with Kohler Illumination  
System

#### Optional

1. Insert Phase Contrast Apparatus
2. Dry Darkfield Condenser, Oil-darkfiled Condenser
3. Polarizing Device
4. Plan Objective Set, Infinity Plan Achromatic Objective Set

**Packaging:** Inner Thermocol/Styrofoam Packing and  
Outer Cardboard Box.

# RESEARCH BINOCULAR MICROSCOPE VXL-BINO





The excellent appearance  
in accord with ergonomic design

Integrated body design  
makes products maintains  
long-term stability.

High quality 3W LED lamp  
and long usage life.

**Optical System :** Finite Optical System

**Eyepiece:** PL 10x/23mm High Eyepoint Eyepiece, Diopter Adjustment  $\pm 5$

**Objective :** 45mm DIN Infinity Color Corrected Plan Achromatic Objective: 4X, 10X, 40X(S), 100X(S,Oil)

**Viewing Head :** Articulated Free Trinocular Head, 30°inclined, Interpupillary Distance 50-75mm

**Nosepiece :** Backward Quintuple or Quadruple Objective Nosepiece

**Stage :** 220 x 148mm X-axis Low Hand Position Double Mechanical Stage(steel wire transmission), 76 x 50mm, Precision 0.1 mm , Damped Double Slide Clamp

**Condenser :** Height Adjustable Abbe Condenser Set

**Focussing System :** Coaxial Coarse and Fine Focus Knobs, Precision 0.002mm

**Illumination :** 3W LED Lamp with Kohler illumination System

#### Optional

1. Insert Phase Contrast Apparatus
2. Dry Darkfield Condenser, Oil-darkfiled Condenser
3. Polarizing Device
4. Plan Objective Set, Infinity Plan Achromatic Objective Set

**Packaging:** Inner Thermocol/Styrofoam Packing and Outer Cardboard Box.

# RESEARCH TRINOCULAR MICROSCOPE VXL-TRINO



TRINO



360°



LED



TL



ABBE



INFINITY



230 V



2 DAY



BLXL-Plus is designed keeping user comfort in mind. Conveniently placed controls for fast and efficient observations. With multi layer coating on our objectives having FOV upto 26.5mm, reduce chromatic aberration to low levels, resulting bright and high contrast images even for low light applications like Fluorescence dark field etc. With quintuple nose piece user have choice for extra objectives and multiple illumination techniques. Features adding to user comforts are Light preset switch; Light intensity LED indicator, Built-in filters and many more.

**Optical system** Universal Infinite optical system, color corrected plan

achromatic optics 4x,10x,20x,40x & 100x oil immersion

**Koehler's Illumination** S-LED, Koehler illumination, LED intensity Controller,

**Illumination** Eco-energy saving auto cut off, fly eye lens, built-in filters

**Viewing Head** Inclined, Two/Three position ergo head

**Nosepiece** Quintuple nosepiece with slots for POL / DIC

**Eyepiece** Super wide field 23mm

**Mechanical Stage** Double Layer, Rackless Ceramic Hard Coated, Stage Lock, Double Slide Holder

**Condenser** Swing-out abbe, universal Five/Six position

**Focusing** 3/2 step focusing

**DIC** Slot for holding DIC plate and prism

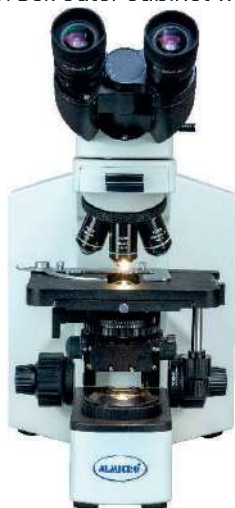
**Teaching Head** Upto 22 person multi viewing attachment

**Filters** Built-in ND Filters

**Packaging:** Inner Thermocol/Styrofoam Packing and Outer Cardboard Box.

**Optional Packaging:**

1) Wooden Box outer cabinet with lock and key (Chargeable).



# RESEARCH TRINOCULAR MICROSCOPE BLXL-Plus



TRINO



360°



LED



TL



ABBE



230 V



2 DAY



# FLUORESCENT MICROSCOPES

As a premier manufacturer of high-quality laboratory microscopes, we pride ourselves on delivering exceptional precision and performance. Our specialized fluorescence microscopes are engineered with utmost care and attention to detail.

A fluorescence microscope is a type of optical microscope that uses fluorescence to illuminate samples. It can detect and visualize fluorescent signals, fluorescently labeled molecules, and cells with fluorescently labeled structures. This technique is widely used in biology, medicine, and materials science.



The excellent appearance  
in accord with ergonomic design

Integrated body design  
makes products maintains  
long-term stability.

High quality 3W LED lamp  
and long usage life.

**Optical Systems:** Plan achromatic optics, antifungal & antireflection  
Coated

**Magnification:** 4x, 10x, 40x, 100x (40x to 100x), (60x and 80x optional)

**Observation Head:** Sidetoph Trinocula/Binocular head inclined at 30 deg.,  
Swivelling 360 deg. rotatable. with Interpupillary distance of 48-75mm. Three  
Way trinocular tube with simultaneous view on camera and eye piece.

**Nose-Piece:** Quadruple Nose Piece.

**Eyepiece:** Wide Field 10x eye-piece with 25mm/25mm  
F.O.V (Anti-Fungal) with rubber eyecups.

**Mechanical Stage:** 210mm X 140mm and X/Y travel range  
90mm x 70mm with upper limit stopper, hard ceramic surface  
dual slide holder.

**Division:** 0.1m Low drive right side movement

**Objective:**

- Plan-achromat/HI PLAN/ 4X NA 0.10
- Plan-achromat/HI PLAN/ 10X NA 0.25
- Plan-achromat/HI PLAN/ 40X NA 0.65
- Plan-achromat/HI PLAN/ 100X NA 1.3

**Condenser:** Swing out condenser/Universal condenser for adaptation of  
switchable condenser heads, NA 0.90 suitable for bright field, phase contrast,  
and fluorescent. Iris diaphragm with frosted white filter, antifungal & anti-reflection  
coated. Rack and pinion movements on stainless steel guides

**Focussing Control:** Two step Co-axial coarse and fine focussing on both  
sides, gear systems for smooth operation. Fine Adjustment

**Transmitted illumination:** 10W LED illumination, variable control, Up to  
60,000 hours of LED life. Universal input 110V-240V AC, 50/60Hz  
(with battery backup-optional)

**Filters:** Single Immuno Fluorescence.

**Fluorescent illumination:** Fluorescence imaging function: LED base  
illumination with LED Light(s) time of 60,000 hours with intensity controller.

# FLUORESCENT MICROSCOPE AFM-50



- > Excellent fluorescent image with high resolution fluorescent objectives
- > Protect the light leak with advanced lamp housing
- > Excellent Optical Function with Infinite Optical System
- > Innovative Stand structure, Sharp Image Display,
- > Convenient and Special for Viewing Incubating Cell Tissue
- > Widely used in venereal disease examination and immuneless diagnosis

**VIEWING HEAD**

Compensation free Trinocular Head inclined at 30°  
Interpupillary Distance : 48-75 mm

**EYEPIECE (OCULAR)**

High point , Extra wide field eyepiece EW10X/20mm

**NOSEPIECE :** Inverse Quadruple Nosepiece

**OBJECTIVES**

Long working distance Infinite Plan Achromatic objective  
4x/0.1, 10x/0.25, 20x/0.65, 40x/1.25

**CONDENSOR:** N.A. 1.25 rack and Pinion Adjustable

**CENTERING TELESCOPE:** Centering telescope 30MM

**STAGE :** Double layer mechanical  
(Size:210mmX140mm, Move range: 75mmX50mm)

**FOCUS SYSTEM**

Coaxial coarse & fine focusing adjustment with tensional adjustable and up stop minimum division of fine focusing: 2µm.

**LIGHT SOURCE FILTER:** Halogen bulb 6V/20W

**FILTER :** Blue, and frosted glass Filters

**REFLECTED FLUORESCENCE SYSTEM**

Mercury Lamp House 100W/DC Power Supply: AV 220V

Fluorescence Filter System B  
exciton wavelength : 420-485nm

Fluorescence Filter System G  
exciton wavelength : 460-550nm

Fluorescence Filter System UV  
exciton wavelength : 330-400nm

**FLUORESCENT ATTACHMENT SPECIFICATIONS**

**Reflected Light Source**

Blue, Green Exciting Light Filter System and Ordinary Light System

**Illumination**

100W HBO Ultra Hi-voltage Spherical Mercury Lamp

**Centering Telescope:** 30MM

**Protection Barrier Power Supply**

Barrier to Resist the Ultraviolet Light

**Fluorescent Objective**

4x, 10x, 40x (S), 100x (S, Oil)

**Immersion Oil**

Fluorescence Free Oil

# FLUORESCENT MICROSCOPE AFM-100



## PHASE CONTRAST ATTACHMENT

This attachment is useful for viewing the detailed structures of unstained or living contrast equipment to convert equipment to convert small differences in thickness and Refractive index of the specimen into differences in brightness.

The set consist of phase turret Condenser N.A. 1.25 with iris diaphragm.

Phase achromatic objectives, 45mm par focal distance 10x (N.A. 0.025) 20x (N.A. 0.40) , 40x (0.65) Spring loaded, 100x (N.A. 1.25 ) Spring loaded, Oil immersion Phase centering telescope, Green filter & Turret condenser key.



## DARK FIELD CONDENSER ATTACHMENT

Dark Field Condenser System is used to observe transparent object. Most plankton are so transparent that they are difficult to see even with bottom lighting. Dark ground illumination (Condenser) is a special kind of lighting used to make them show up better. Dark field condenser stops light coming from directly under the object and only lets it come up from the sides. Only light which reflects off the objects goes into the objective lens. The plankton shows up as bright objects on a dark background.

It comprises suitable immersion type dark field condenser with centering screws N.A. 1.20-1.33 & Achromatic objective 100x (SL) oil immersion with iris diaphragm for use dark field as well as on bright field.



# PHASE CONTRAST & DARK FIELD ATTACHMENTS



# INVERTED TISSUE CULTURE MICROSCOPES

We specialize in crafting high-quality inverted tissue microscopes that cater to the specific needs of researchers in the field of tissue analysis. Our exceptional inverted tissue microscopes combine advanced optics with ergonomic design for precise and comfortable imaging.

With uncompromising quality and superior imaging capabilities, our microscopes enable detailed examination and analysis of tissue samples, empowering scientists to unlock new insights in the realm of cellular research.



# INVERTED TISSUE CULTURE TM-8/8A

ALMICRO Inverted Tissue Culture Microscope is used for tissue culture examination. This Microscope has coarse and fine adjustment, incident LED Light with variable light control arrangement.

It comes equipped with long working distance objectives and binocular head, complete with following optics in box :

**LWD Objectives:** 5x, 10x, 20x, 40x

**Wide Field Eye pieces:** 10x (Paired)

**Packaging:** Inner Thermocol/Styrofoam Packing and Outer Cardboard Box.



BINO



LED



TL



ABBE



230 V



TM-8A



- > High quality inverted biological microscope, having trinocular head, phase-contrast, ideal for lab
- > With Infinite optical system, providing excellent optical quality and making image perfect.
- > Creative body structure, sharp specimen image, convenient operation, specially designed for cell culture observing
- > Long working distance and Infinite Plan Objective, make visual field of specimen flatter, brighter, better contrast, and even more easy to observe the living cell's state
- > Standard Phase Contrast Annular Spot, center adjustable, enable observe low contrast or transparent specimen to get a sharp image

**Packaging:** Inner Thermocol/Styrofoam Packing and Outer Cardboard Box.

**VIEWING HEAD:**

Compensation free Binocular/ Trinocular Head inclined at 30°, 360°, Rotatable Interpupillary Distance: 48-75 mm

**EYEPIECE (OCULAR):**

High point, Extra wide field eyepiece EW10X/22mm

**NOSEPIECE:**

Inverse Quintuple Nosepiece

**OBJECTIVES:**

Long working distance Infinite Plan Achromatic objective (4x/0.1, WD 18mm), (10x/0.25, WD 10mm), (20x/0.4, WD 5.1 mm), (40x/0.6, WD 2.6mm- cover slip 1.2mm)

Infinite Plan Phase Objective : PH 10x/0.25, WD 10mm PH 20x/0.4, WD 5.1 mm PH 40x/0.6, WD 0.35 (cover slip 1.2mm) mm

**CONDENSOR:**

Super long working distance condenser NA0.3, LWD72mm; If unload the condenser, the culture dish height could be 150mm

**CENTERING TELESCOPE:** Centering telescope 030MM

**STAGE:** Plane stage 160x250mm

**PHASE CONTRAST SLIDING PLATE**

10X, 20X-.40X center adjustable  
Phase Contrast sliding plate

**FOCUS SYSTEM**

Coaxial coarse & fine focusing adjustment with rack and pinion mechanism Fine focusing scale Value 0.002mm

**LIGHT SOURCE FILTER:**

Halogen bulb 6V/30W

**FILTER :**

Blue, green, yellow and frosted glass

# INVERTED TISSUE CULTURE TM-9





# STEREO ZOOM MICROSCOPES

As a renowned manufacturer of high-quality stereo zoom microscopes, we are committed to providing researchers and professionals with exceptional optical instruments for precise observation and analysis. Our innovative products offer superior zooming capabilities, crystal-clear imaging, and ergonomic design for comfortable usage.

With our commitment to excellence and advanced technology, our stereo zoom microscopes deliver unparalleled performance and reliability, making them indispensable tools in various fields of research and industry.

The excellent appearance  
in accord with ergonomic design

Integrated body design  
makes products maintains  
long-term stability.

High quality 3W LED lamp  
and long usage life.

Student stereo Microscope has been designed for Dissection / Inspection of specimens in Biology. Precisely designed long working distance objectives & wide field eyepieces produce an extremely large, brilliant & bright images. It is light in weight having sturdy base, stage with clips and reversible black & white plate. straight Binocular Head with interpupillary adjustment & Hand grip on stand for safe handling.

Fixed Achromatic Objectives 2x or 3x & widefield eyepieces WF 10x or WF 15x (paired) are available on pillar stand with dioptic correction & trans illumination base as optional.

**Packaging:** Inner Thermocol/Styrofoam Packing and Outer Cardboard Box.

# STUDENT STEREO MICROSCOPE DS-22





The excellent appearance  
in accord with ergonomic design

Integrated body design  
makes products maintains  
long-term stability.

High quality 3W LED lamp  
and long usage life.

- > Binocular Head Inclined at 45°, Interpupillary 55-75mm
- > Wide Field Eyepiece EW 10x & 18x
- > Objective - 2x/4x or 1x/3x
- > Working Distance 100mm
- > Stage 95mm,
- > 1 Pc Frosted Glass Stage (For Bottom Illumination)
- > 1 Pc Plastic Black/White Plate (For Top Illumination)
- > Illumination Transmit & Reflected

**Packaging:** Inner Thermocol/Styrofoam  
Packing and Outer Cardboard Box.

# STEREO MICROSCOPE

## DS-50



BINO



IL



HAL



230 V



2 DAY



Binocular Zoom Stereo Microscope adopts streamline integrated mechanical design. Easy operation, long working distance, clear resolved image, enclosure integrated. It can be extensively used for observation studies in medical and health, farming and forestry, biology and botany, as well as for inspection, assembling and repair of tiny precision parts in electronics and precision machine industries.

**Specifications:**

**Viewing tube:** Binocular, tube inclined at 45°, rotated at 360°, adjustable inter papillary distance (55-75mm), the left and right tubes have diopter adjustment

**Eyepiece:** WF10X

**Objective:** Zoom ratio 6.4:1, zooming range 0.7X to 4.5X

**Main body:** Column type

**Top and bottom illumination:** Reflected and transmitted halogen lamp, 6V/15W

**Packaging:** Inner Thermocol/Styrofoam Packing and Outer Cardboard Box.

# STEREO ZOOM MICROSCOPE DSZ-77



TRINO



IL



HAL



ZOOM



230 V



2 DAY



BOTONY



ARCHEOLOGY



ZOOLOGY



WATCH INDUSTRY



ELECTRONICS



GEM INDUSTRY

Trinocular Zoom Stereo Microscope adopts streamline integrated mechanical design. Easy operation, long working distance, clear resolved image, enclosure integrated. It can be extensively used for observation studies in medical and health, farming and forestry, biology and botany, as well as for inspection, assembling and repair of tiny precision parts in electronics and precision machine industries.

**Specifications:**

**Viewing tube:** Binocular, tube inclined at 45°, rotated at 360°, adjustable inter papillary distance (55-75mm), the left and right tubes have diopter adjustment

**Eyepiece:** WF10X

**Objective:** Zoom ratio 6.4:1, zooming range 0.7X to 4.5X

**Main body:** Column type

**Top and bottom illumination:** Reflected and transmitted halogen lamp, 6V/15W

**Packaging:** Inner Thermocol/Styrofoam Packing and Outer Cardboard Box.

# STEREO ZOOM MICROSCOPE DSZ-88



TRINO



IL



HAL



ZOOM



230 V



2 DAY



BOTONY



ARCHEOLOGY



ZOOLOGY



WATCH INDUSTRY



ELECTRONICS



GEM INDUSTRY

Trinocular Gemological Microscope adopts streamline integrated mechanical design. Easy operation, long working distance, clear resolved image, enclosure integrated. It can be extensively used for observation studies of Gems and Stones.

**Specifications:**

- Superior Japanese (Hoyo or other) optics
- 20X-80X zoom stereo head
- True darkfield illumination halogen lamp 12V 10W
- Adjustable iris diaphragm
- Gem clip
- Eye piece : 10/20x
- Internationally adaptable voltage 120V/240V
- 360 degrees rotating head
- Dist cover, One year mechanical and electrical warranty

# GEMOLOGICAL MICROSCOPE

## GM-01



TRINO



IL



HAL



ZOOM



230 V



2 DAY





# POLARIZING MICROSCOPES

We are a leading manufacturer of high-quality polarizing microscopes, dedicated to empowering researchers and professionals in the field of materials analysis. Our state-of-the-art polarizing microscopes combine precision optics with advanced polarizing capabilities, enabling detailed examination of birefringent materials. With exceptional image clarity, ergonomic design, and robust construction, our polarizing microscopes deliver accurate and reliable results, making them essential tools for geological, mineralogical, and material science research. Trust us for uncompromising quality and unrivaled performance in polarized light microscopy.

Limb type hinged body inclinable 90°. Bertrand lens, sliding analyser 1/4 wave & full wave compensator Ball Bearing mounted, rotatable stage divided 0-360° with vernier Adjustable condenser N.A. 1.25. Polariser duly graduated with in- out system. Objectives P5x, P10x, P40x/45x. Eye-piece 5x( cross), 10x( ocular) & 15x( optional). Plano-concave reflector replaceable by sub-stage L.E.D. Lamp(optional)

**Packaging:** Inner Thermocol/Styrofoam Packing and Outer Cardboard Box.



# STUDENT POLARIZING MICROSCOPE PM-9





- > Monocular head replaceable with Bertrand lens, Sliding Analyzer 1/2 & 1/4 wave compensator.
- > Co-axial Focussing system
- > Rotatable stage divided into 0-360° with vernier
- > Adjustable Condenser N.A. 1.25.
- > Polarizer duly graduated with in- out system. Built in light arrangement with 6V20W halogen lamp.
- > Solid State light control arrangement.
- > Paired eye piece 5x(cross), 10x(ocular), 15x (optional).
- > Objectives P5x, P10x, P40x/45x

**Packaging:** Inner Thermocol/Styrofoam Packing and Outer Cardboard Box.



MONO



POLAR



TL



HAL



230 V



2 DAY



- > Binocular head replaceable with Monocular and Trinocular head.
- > Bertrand lens, Sliding Analyzer 1/2 & 1/4 wave compensator.
- > Co-axial Focussing system
- > Rotatable stage divided into 0-360° with vernier
- > Adjustable Condensor N.A. 1.25.
- > Polarizer duly graduated with in- out system. Built in light arrangement with 6V-20W halogen lamp.
- > Solid State light control arrangement.
- > Paired eye piece 5x(cross), 10x(ocular), 15x ( optional).
- > Objectives P5x, P10x, P40x/45x

**Packaging:** Inner Thermocol/Styrofoam Packing and Outer Cardboard Box.



# BINOCULAR POLARIZING MICROSCOPE PM-11



BINO



POLAR



TL



HAL



230 V



2 DAY



- > Trinocular head replacable with Monocular , and Binocular head. Bertrand lens, Sliding Analyzer 1/2 & 1/4 wave compensator.
- > Rotatable stage divided into 0-360° with vernier
- > Adjustable Condensor N.A. 1.25.
- > Co-axial Focussing system
- > Polarizer duly graduated with in- out system. Built in light arrangement with 6V20W halogen lamp. Solid State light control arrangement.
- > Paired eye piece 5x( cross), 10x(ocular), 15x (optional).
- > Objectives P5x, P10x, P40x/45x

**Packaging:** Inner Thermocol/Styrofoam Packing and Outer Cardboard Box.



# TRINOCULAR POLARIZING MICROSCOPE PM-12





- > Both Incident & Transmitted lights are provided for ore Microscopy
- > Binocular head replacable with Monocular , and Trinocular head. Bertrand lens, Sliding Analyzer 1 /2 & 1 /4 wave compensator.
- > Co-axial Focussing system
- > Rotatable stage divided into 0-360° with vernier
- Adjustable Condensor N.A. 1.25.
- > Polarizer duly graduated with in- out system. Built in light arrangement with 6V-20W halogen lamp.
- > Solid State light control arrangement.
- > Paired eye piece 5x(cross), 10x(ocular), 15x (optional).
- > Objectives P5x, P10x, P40x/45x

**Packaging:** Inner Thermocol/Styrofoam Packing and Outer Cardboard Box.

# ORE MICROSCOPE

## OR-01



TRINO



POLAR



TL



HAL



LED



230 V



2 DAY



OR-02 with  
Trinocular Head



# MULTI HEAD MICROSCOPES

As a premier manufacturer of high-quality penta and decahead microscopes, we are dedicated to providing researchers and professionals with exceptional imaging solutions for multi-sample observation. Our advanced multihead microscopes, feature precise positioning, bright illumination, and ergonomic design for efficient sample analysis. With superior optics and robust construction, our penta and decahead microscopes offer unparalleled versatility and reliability, making them ideal tools for diverse laboratory applications. Trust us for cutting-edge technology and uncompromising quality in multi-sample microscopy.

This Microscope comes with Achromatic optical system, which provides a very good optical quality image. Also, with 5 Binocular head system, provided with a wooden table, makes it easier to simultaneously see the sample and study them together for 5 people. High intensity LED lighting makes it easier to view the samples without any stress. This makes the microscope optimum for Medical & Dental College Students.

- > 5 Binocular head for multiple view
- > Wide Field Eyepiece WF 10x/18mm
- > Quadruple Nosepiece
- > Achromatic Objective 4x, 10x, 40x, 100x
- > Swing Condenser N.A.0.9/0.25
- > Coaxial Coarse and Fine Adjustment,
- > Fine Division 0.002mm
- > Plain Layer Mechanical Stage 140mm x 140mm
- > Halogen lamp 6V/30W, Brightness Adjustable
- > LED Pointer, Brightness Adjustable

**Packaging:** Inner Thermocol/Styrofoam Packing and Outer Cardboard Box.

# PENTAHEAD MICROSCOPE

## X-555



This Microscope comes with Infinity corrected plan optical system, which provides excellent optical quality image makes it easier to simultaneously see the slide and study it together for 10 people. This makes the microscope optimum for Medical/Dental College and Research use.

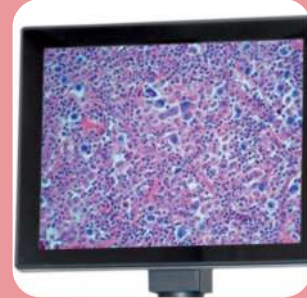
- > 1 Trinocular main Head & 9 Seidentopf Binocular heads inclined at 30°
- > Wide Field Eyepiece EWF 10X/22mm
- > Quadruple Nosepiece
- > Infinity plan Objective 4x , 10x, 40x, 100x
- > Abbe Condenser N.A. 1.25
- > Coaxial Coarse and Fine Adjustment
- > Double Layer Mechanical Stage 180mmx160mm
- > Halogen lamp 12V/1 00W , Brightness Adjustable
- > LED Cursor Pointer, Brightness Adjustable

**Packaging:** Inner Thermocol/Styrofoam Packing and Outer Cardboard Box.

# DECAHEAD MICROSCOPE

## X-10





# DIGITAL & PROJECTION MICROSCOPES

We specialize in crafting high-quality digital microscopes that revolutionize the way researchers and professionals observe and analyze samples. Our advanced digital microscopes combine exceptional optics with state-of-the-art digital imaging technology, allowing for precise imaging, real-time video capture, and seamless connectivity. With user-friendly interfaces and versatile features, our digital microscopes empower users to capture, analyze, and share high-resolution images and videos with ease.

Trust us for unparalleled quality and innovation in digital microscopy.

## Research Microscope with 7" LED Display

### MAIN SPECIFICATIONS

**VIEWING HEAD:** Compensation free Trinocular Head inclined at 45°,

Interpupillary Distance: 55-75 mm

**EYEPIECE (OCULAR):** 10x (paired),  
field of view : 20mm

**Objective :** Achromatic : 4x, 10x, 40x, 100x

**Nosepiece :** Quadruple nosepiece with positive click stops moving on balls

**Focussing System :** Co-axial Coarse and Fine Focusing System, Sensitivity and Graduation of Fine Focus :

0.004mm, Range : 24mm

**CONDENSOR:** Abbe N.A. 1.2

**STAGE:** Double Layer Mechanical Stage, Area: 132X142mm,  
Movement Range : 75x40mm

**LAMP HOUSE:** LED Lamp 3W

### DISPLAY SPECIFICATIONS

**LED SIZE:** 7" TFT LED Screen (All functions controlled by remote control)

**VALID PIXEL:** 3 M.P.

**POWER:** DC 12V

**Packaging:** Inner Thermocol/Styrofoam Packing and Outer Cardboard Box.

# DIGITAL VIDEO MICROSCOPE

## DVM - 01





## Research Microscope with 7" LED Display

### MAIN SPECIFICATIONS

**TUBE LENGTH:** 160mm

**VIEWING HEAD:** Compensation free Binocular Head inclined at 30°, Interpupillary Distance: 55-75 mm

**EYEPIECE (OCULAR):** Line field of view : 18mm

**Objective :** Plan Achromatic : 4x, 10x, 40x, 100x

**Nosepiece :** Backward Quadruple Nosepiece

**Focussing System :** Co-axial Coarse and Fine Focusing System, Sensitivity and Graduation of Fine Focus : 0.004mm, Range : 24mm

**CONDENSOR:** Abbe N.A. 1.2

**STAGE:** Double Layer Mechanical Stage, Area: 132X142mm, Movement Range : 75X40mm

**LAMP HOUSE:** Halogen Lamp 6V,20W or LED Lamp 3W

**Inbuilt Battery Backup Facility**

### DISPLAY SPECIFICATIONS

**LED SIZE:** 7" TFT LED Screen (All functions controlled by remote control)

**VALID PIXEL:** 3 M.P.

**POWER:** DC 12V

**Packaging:** Inner Thermocol/Styrofoam Packing and Outer Cardboard Box.

# DIGITAL VIDEO MICROSCOPE

## DVM - 01 Plus







## Research Microscope with 9" LED Display

### MAIN SPECIFICATIONS

**VIEWING HEAD:** Compensation free Trinocular Head inclined at 45°, Interpupillary Distance: 55-75 mm

**EYEPIECE (OCULAR):** 10X (paired), field of view : 20mm

**Objective :** Achromatic : 4X, 10X, 40X, 100X

**Nosepiece :** Quadruple nosepiece with positive click stops moving on balls

**Focussing System :** Co-axia Coarse and Fine Focusing System. Sensitivity and Graduation of Fine Focus : 0.004mm, Range : 24mm

**CONDENSOR:** Abbe N.A. 1.2

**STAGE:** Double Layer Mechanical Stage, Area: 132X142mm, Movement Range : 75X40mm

**LAMP HOUSE:** Halogen Lamp 6V,20W or LED Lamp 3W

### CAMERA SPECIFICATION

**IMAGE SENSOR:** 1/2.5" (4:3), 5 Mega Pixel Color CMOS Sensor

**VALID PIXEL:** 2592H x 1944V

**PIXEL SIZE:** 2.2um x 2.2um

**DYNAMIC RANGE:** 66.5dB

**RESOLUTION & FRAME FREQ.:** Frame Rate -1280x720 15 f/s:640x480 30f/s

**S/N RATIO:** 40.5dB

**SENSITIVITY:** 0.53V/lux-sec(550nm)

### TABLET SPECIFICATION

**LED SIZE:** 9.7inch 1024\*768 IPS LCD

**RAM:** 1GB DDR3 RAM

**ROM:** 2GB Internal Memory, External SD Memory Card, Maximum Capacity Up to 32GB

**BANDING SOFTWARE:** Build-in Microscopy Software (Measuring and Particle Analysis)

**POWER:** DC5V Power

**OPERATING SYSTEM:** Android 4.2.2

**OUTPUT:** HDMI Output, SD Card Support, Bluetooth

**Packaging:** Inner Thermocol/Styrofoam Packing and Outer Cardboard Box.

# DIGITAL VIDEO MICROSCOPE

## DVM - 02



HDMI



BINO



SCALE



LED



TL



SOFTWARE



SD



230 V



2 DAY



### MAIN SPECIFICATIONS

**Viewing Head:** Trinocular Head Inclined at 30°, 360° Rotatable, Interpupillary Distance 54-75 mm. Diopter. Adjustable ± 5 On Left Tube

**Eyepiece (ocular):** Wide Field Eyepiece WF10X/18mm

**Objective :** Plan Achromatic Objectives 4x, 10x, 40xs, 100xs(oil)

**Nosepiece :** Quadruple Nosepiece

**Focussing System :** Coaxial Coarse and Fine Adjustments, Fine Division 0.002mm, Coarse Stroke 36mm Supplied With An Adjustable Rack Stop To Prevent Damage To Sample And Objectives, The Coarse Adjustment Are Equipped With Friction Control

**Condensor:** Abbe Condenser N.A. 1.25 With Iris Diaphragm And Filter Holder

**STAGE:** Double Layer Mechanical Stage 110x125mm, Moving Range 30x75mm

**Illumination:** 3W LED, Brightness Adjustable, Powered By Outlet 110-240V Adapter

**Adapter:** Eyepiece Tube Adapter

**Inbuilt Battery Backup Facility**

### CAMERA SPECIFICATION

**IMAGE SENSOR:** 1/2.5" (4:3), 5 Mega Pixel Color CMOS Sensor

**VALID PIXEL:** 2592H x 1944V

**PIXEL SIZE:** 2.2µm x 2.2µm

**DYNAMIC RANGE:** 66.5dB

**RESOLUTION & FRAME FREQ.:** Frame Rate -1280x720 15f/s: 640x480 30f/s

**S/N RATIO:** 40.5dB

**SENSITIVITY:** 0.53V/lux-sec(550nm)

### TABLET SPECIFICATION

**LED SIZE:** 9.7inch 1024\*768 IPS LCD Video Capacity

**RAM:** 1GB DDR3 RAM

**ROM:** 2GB Internal Memory, External SD Memory Card, Maximum Capacity Up to 32GB

**BANDING SOFTWARE:** Build-in Microscopy Software (Measuring and Particle Analysis)

**POWER:** DC5V Power

**OPERATING SYSTEM:** Android 4.2.2

**OUTPUT:** HDMI Output, SD Card Support, Bluetooth

**Packaging:** Inner Thermocol/Styrofoam Packing and Outer Cardboard Box.

# DIGITAL VIDEO MICROSCOPE

## DVM - 02 Plus



HDMI



BINO



SCALE



LED



TL



SOFTWARE



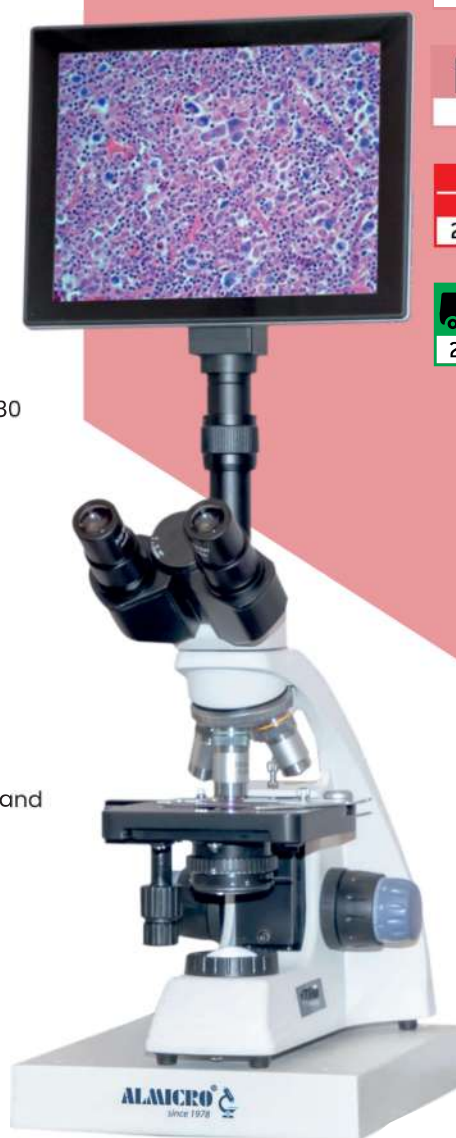
SD



230 V



2 DAY



### MAIN SPECIFICATIONS

**VIEWING HEAD:** Trinocular Head Inclined at 30°, 360° Rotatable, Interpupillary Distance 54-75 mm, Diopter Adjustable ± 5 On Left Tube

**EYEPIECE (OCULAR):** Wide Field Eyepiece WF10X/18mm

**Objective :** Semi Plan Achromatic Objectives 4x, 10x, 40xs, 100xs(oil)

**Nosepiece :** Quadruple Nosepiece

**Focussing System :** Coaxial Coarse and Fine Adjustments, Fine Division 0.002mm, Coarse Stroke 36mm Supplied With An Adjustable Rack Stop To Prevent Damage To Sample And Objectives, The Coarse Adjustment Are Equipped With Friction Control

**CONDENSOR:** Abbe Condenser N.A. 1.25 With Iris Diaphragm And Filter Holder

**STAGE:** Double Layer Mechanical Stage 110X125mm, Moving Range 30x75mm

**LAMP HOUSE:** 3W LED, Brightness Adjustable, Powered By Outlet 110-240V Adapter

### CAMERA SPECIFICATION

**IMAGE SENSOR:** 1/2.5" (4:3), 5 Mega Pixel Color CMOS Sensor

**VALID PIXEL:** 2592H x 1944V

**PIXEL SIZE:** 2.75µm x 2.75µm

**DYNAMIC RANGE:** 66.5dB

**RESOLUTION & FRAME FREQ.:** Frame Rate - 1024 x 600@30FPS

**S/N RATIO:** 40.5dB

**SENSITIVITY:** 0.53V/lux-sec(550nm)

### TABLET SPECIFICATION

**LED SIZE:** 9inch 1024\*768 IPS LCD Video Capacity

**RAM:** 1GB DDR3 RAM

**POWER:** DC5V Power

**SYSTEM CONNECTIVITY:** PC Connect through software

**OUTPUT:** USB Output to PC and Mouse Support

**Packaging:** Inner Thermocol/Styrofoam Packing and Outer Cardboard Box.



BINO



LED



TL



SOFTWARE



SD



USB 2.0



230 V



2 DAY



**MAIN SPECIFICATIONS**

**VIEWING HEAD:** Trinocular Head Inclined at 30°, 360° Rotatable, Interpupillary Distance 54-75 mm, Diopter Adjustable ± 5 On Left Tube

**EYEPIECE:** Wide Field Eyepiece WF10X/18mm

**Objective :** Plan Achromatic Objectives 4x, 10x, 40xs, 100xs(oil)

**Nosepiece :** Quadruple Nosepiece

**Focussing System :** Coaxial Coarse and Fine Adjustments, Fine Division 0.002mm, Coarse Stroke 36mm Supplied With An Adjustable Rack Stop To Prevent Damage To Sample And Objectives, The Coarse Adjustment Are Equipped With Friction Control

**CONDENSOR:** Abbe Condenser N.A. 1.25 With Iris Diaphragm And Filter Holder

**STAGE:** Double Layer Mechanical Stage 110x125mm, Moving Range 30x75mm

**ILLUMINATION:** 3W LED, Brightness Adjustable, Powered By Outlet 110-240V Adapter

**ADAPTER:** Eyepiece Tube Adapter

**Inbuilt Battery Backup Facility**

**CAMERA SPECIFICATION**

**IMAGE SENSOR:** 1/2.5" (4:3), 5 Mega Pixel Color CMOS Sensor

**VALID PIXEL:** 2592H x 1944V

**PIXEL SIZE:** 2.75µm x 2.75µm

**DYNAMIC RANGE:** 66.5dB

**RESOLUTION & FRAME FREQ.:** Frame Rate - 1024 x 600@30FPS

**S/N RATIO:** 40.5dB

**SENSITIVITY:** 0.53V/lux-sec(550nm)

**TABLET SPECIFICATION**

**LED SIZE:** 9inch 1024\*768 IPS LCD Video Capacity

**RAM:** 1GB DDR3 RAM

**POWER:** DC5V Power

**SYSTEM CONNECTIVITY:** PC Connect through software

**OUTPUT:** USB Output to PC and Mouse Support

**Packaging:** Inner Thermocol/Styrofoam Packing and Outer Cardboard Box.

DIGITAL VIDEO  
MICROSCOPE

DVM - 03 Plus



**Head:** Trinocular Head, Sidentoph at 30°, 360° Rotatable, Interpupillary Distance 50-75 mm, Diopter Adjustable ± 5 On Left Tube

**Eyepiece:** Wide Field Eyepiece WF 10X/20mm

**Objective :** SP Plan Achromatic Objectives 4x, 10x, 40x, 100x(oil)

**Viewing Head :** Articulated Free Trinocular Head, 30°inclined, Interpupillary Distance 50-75mm

**Nosepiece :** Reverse Quadruple Nosepiece (inward facing)

**Focusing System :** Coaxial Coarse and Fine Adjustments, Fine Division 0.002mm, Coarse Stroke 37.7mm Supplied With An Adjustable Rack Stop To Prevent Damage To Sample And Objectives, The Coarse Adjustment Are Equipped With Friction Control

**Stage:** Double Layer Mechanical Stage 140x140mm, Moving Range 50x75mm

**Illumination :** 3W LED, Brightness Adjustable, Powered by 110-240V Adapter

**Packaging:** Inner Thermocol/Styrofoam Packing and Outer Cardboard Box.

#### WINDOWS TABLET SPECIFICATION

Screen Size	11"
Camera Sensor size	1/2.3"
Effective pixels	16 million pixels
Resolution	1920*1080@30FPS
Output	USB2.0, HDMI, TF card, WIFI
Pixel size	1.335*1.335um
Power	DC-12V/2A

#### Software Features

UI, Digital design, mouse operation, humanized setting, Mark function, Point coordinates, cross lines, coordinate systems, text annotations, Length measuring, Line length, Line length, length of curve, parallel line distance and point line distance Center distance of circles, Radius fixed circle, two point, circle, three point fixed circle, Geometry measurement, Line length, radius fixed circle, two point circle, three point fixed circle, concentric circle, Geometry area Polygon and square Image capture Support 16M photos

Video record	Support 1080P video
Measuring Tool	S-EYE Software

# DIGITAL VIDEO MICROSCOPE

## DVM - 04

*ultra*

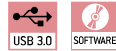


## ACVT-32 A

ACVT32B Series cameras are high end microscope camera, specially designed for microscope application. Adopt large area array high performance SONY sensor, with image buffer technology. Have various outstanding features like Low noise, High definition, Excellent color reproduction and stable transmission etc.

### TECHNICAL SPECIFICATIONS

SensorType	Sony
ColorType	Color
Pixel	3MP / 5MP
PixelSize	2.1µm
SensorSize	1/2.5"
ShutterType	Rolling
Resolution	2048X1536 / 2592X1944
DataInterface	USB3.0
FrameRate	6FPS
LensMount	CMountLens



# IMAGING CAMERAS

ACVT-32 A (3MP)



ACVT-32 B (5MP)

## HD-01

- HDMI 1080P 30- frame image output
- USB2.0 driver-free output 1080P 30 frame image output
- 4K video recording
- 16 million photos, JPG format, photo size 4608×3456
- One-key freeze / thaw function
- 16 million pixel camera and 1080P video recording
- Electronic zoom function
- Support manual / automatic exposure, exposure compensation value adjustment
- Support manual / automatic white balance, red, green and blue adjustable
- Provide 8 line drawing functions, line color, thickness, position adjustable
- Provide center crosshair display / close
- Support TF card storage, maximum support 64GB
- Support remote control operation, the picture is clearer without shaking
- Support shutdown parameter saving
- Sturdy metal shell



# Projection Microscope

(KW-500)

## **Illumination**

It comes equipped with 12V 100W Halogen Lamp

## **Stage**

110 x 110mm square stage is provided with stage clips to hold the slide ( optional Mechanical Stage)

## **Focussing**

Focussing control knob on both sides of the instrument is conveniently located for easy operation of the rack and pinion with 15mm range.

## **Nose Piece**

Triple revolving nosepiece with positive click stops.

## **Screen & Wall Projection**

160mm dia. optically true ground glass screen is provided to have high resolving power. The screen housing is hinged to the body frame and can be removed to one side to have projection on the wall or screen in a dark room

## **Objectives**

This Microscope is equipped with three Achromatic objectives 5x, 10x & 20x

**Packaging:** Inner Thermocol/Styrofoam Packing and Outer Cardboard Box.





**Body**

Monocular fixed straight tube (Length - 160mm)

**Illumination**

LED Lamp

**Stage**

110 x 110mm square stage is provided with stage clips to hold the slide (optional Mechanical Stage).

**Focussing**

Focussing control knob on both sides of the instrument is conveniently located for easy operation of the rack and pinion with 15mm range.

**Nose Piece**

Triple revolving Nosepiece with positive click stops

**Screen**

150mm diameter glass projection screen is provided which can be rotated over 360 degrees on Microscope tube.

**Objectives**

Achromatic 4x, 10x & 40x

**Packaging:** Inner Thermocol/Styrofoam Packing and Outer Cardboard Box.

STUDENT  
PROJECTION  
MICROSCOPE  
(Doom Type)

KW-700C

